

**neo** p550

new. efficient. optimal.

**optrel**<sup>®</sup>  
swiss made 



**PROLINE**  
professional welding supplies

Ph: 0800 699 353  
[sales@prolinewelding.com](mailto:sales@prolinewelding.com)



**new design.**  
**efficient performance.**  
**optimal price.**

The optrel **neo p550** combines the advantages of the proven p550 helmet shell with the newest ADF technology from optrel. Experience true color vision in a mid-price helmet. With a new efficient energy concept that keeps it action-ready for 3,000 hours. And a reaction time of only 0.1 ms after striking a welding arc. Perfect protection and comfort for your eyes!



COLOR SPECTRUM OF A  
STANDARD ADF



COLOR SPECTRUM OF THE  
OPTREL NEO P550 WITH TRUE COLOR VIEW



The welder's normal world: environment in green shades with low contrast levels.

The optrel revolution: finally experience true color view during the whole welding process.

**Ph: 0800 699 353**  
**[sales@prolinewelding.com](mailto:sales@prolinewelding.com)**

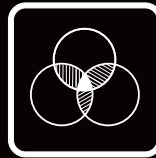
# A classic with newest ADF technology.

The optrel p550 is one of the best-selling welding helmets from optrel. With its new ADF technology it now gets even better.



## SHADE LEVEL 4 / 9-13

With a seamless shade level adjustment from DIN 9 to 13, the **optrel neo p550** is the perfect solution for all popular welding applications.



## TRUE COLOR VIEW

The specially developed UV/IR filter allows a realistic perception of colors, at long last bringing color into the world of the welder.



## DELAY FUNCTION

After shutdown of the welding arc, the ADF momentarily stays closed to protect eyes from the strong afterglow of the welding seam.



## LIGHTWEIGHT





Weighing only 495g, the **optrel neo p550** is one of the lightest automatic welding helmets available. Its ergonomic design minimizes strain on the head and neck, ensuring comfort throughout the work day.

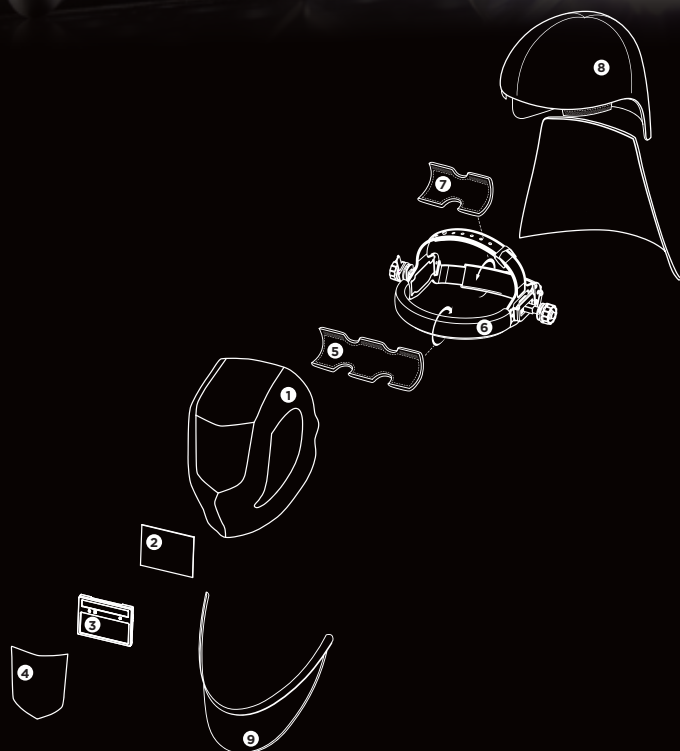


## NEW ENERGY CONCEPT

With its radically more energy efficient electronic system including a „Super-Sleep-Mode“ the **neo p550** stays ready to use for approximately 3,000 hours without changing batteries.



Helmet system	Item no.	Helmet system	Item no.
 <b>neo p550</b> welding helmet black	1007.000	 <b>neo p550</b> welding helmet black with hard hat	1007.001
 <b>neo p550</b> welding helmet green	1007.011	 <b>neo p550</b> welding helmet carbon	1007.073



Spare parts and accessories	Item no.
1a Helmet shell <b>neo p550</b> black	5001.650
1b Helmet shell <b>neo p550</b> green	5001.661
1c Helmet shell <b>neo p550</b> carbon	5001.651
2 Inside cover lens (5 pcs.)	5000.001
3 ADF cartridge <b>neo p550</b>	5012.700
4 Front cover lens (5 pcs.)	5000.250
5 Adjustable headband (including sweatband and comfortband)	5003.250
6 Cotton sweatband (2 pcs.)	5004.073
7 Comfortband (2 pcs.)	5004.020
8 Head & neck protector, leather	4028.016
9 Chest protector, leather	4028.015





# TECHNICAL DATA

Description	ADF cartridge with true color view Shade levels from 9 to 13 continuously adjustable with knob; continuously adjustable sensitivity (with 'super high' range) and delay function		
Shade levels	inactive:	Shade level 4	
	active:	Shade level 9-13	
Power supply	Solar cells, 2 pcs batteries 3V exchangeable (CR2032)		
Operating time batteries	Approx. 3,000 hours (operating)		
Sensors	3 sensors		
Sensitivity	Continuously adjustable, new with "Super High" sensitivity		
Switching time	light to dark: 0.100 ms at room temperature 0.100 ms at 55°C  dark to light: 0.05 s - 1.0 s		
Classification EN379	Optical class:		1
	Scattered light:		1
	Homogeneity:		1
	Angular dependence:		2

Field of view	50 x 100 mm 90 x 110 x 9.5 mm
Shape stability	Welding mask: up to 220°C / 428°F Front cover lens: up to 137°C / 266°F
Eye protection	Ultraviolet / Infrared Protection: maximum protection at any shade level
Operating temperature	-10°C to + 70°C / 14°F to 158°F
Storage temperature	-20°C to + 70°C / -4°F to 176°F
Weight	495 g / 17.4 oz
Application ranges	Any electric arc welding process Electrode Welding (Stick Welding, SMAW) / MIG / MAG (GMAW) / GMAW High melting rate process / Flux Cored Wire Welding / TIG welding (GTAW) / Plasma Arc Welding / Plasmacutting & Oxy-gas Welding <i>Prohibited for laser welding!</i>
Scope of delivery	Welding helmet, instruction manual, batteries
Standards	CE, ANSI, EAC, AS/NZS, complies with CSA Z94.3
Warranty	2 years (except batteries)





Professional welding  
with true color view.



**PROLINE**  
professional welding supplies

Ph: 0800 699 353  
[sales@prolinewelding.com](mailto:sales@prolinewelding.com)